

Your success
is more than a
pipe dream



PRINCIPAL DEVELOPMENT ENGINEER

At Unitywater we operate in a flexible, inclusive and exciting environment where no two days are ever the same. We continually pursue efficiencies and innovation to meet challenging demands, and our customers are at the heart of everything we do. We are one of the largest employers in the region, offering our people continual investment in training, diverse career paths, health and wellness benefits, competitive remuneration and a hardworking and rewarding environment.

Located at our Caboolture office, we have an exciting opportunity for a Principal Development Engineer to join our Infrastructure Planning and Development team. This is an exciting permanent opportunity for you to cement your career within Unitywater offering services to a high growth corridor of the Moreton Bay and Sunshine Coast regions.

Within this role you will provide high level expert engineering advice, assessment and service delivery in relation to development applications and approvals, including dealing with politically sensitive requests, corporate activities and communicating with external bodies.

To be successful in the role you will hold a Degree or Diploma in Civil Engineering coupled with significant experience in a similar role. Demonstrated experience in water supply and sewerage aspects relevant to land development and have the ability to interpret and apply relevant legislative frameworks.

This is a fast paced and challenging yet rewarding position in which your time management, prioritisation skills, the ability to think critically to unique problems and strong stakeholder management skills will be key to your success.

Apply today and be part of the team!

Unitywater provides high quality, safe and reliable water and sewerage services to approximately 724,626 people and manages \$3.2 billion worth of essential service infrastructure. We are proud of the awards we have won for our industry contributions and we will continue to produce the highest food-grade product for our customers.

We are looking for talented individuals to join our team and would love to hear from you!

Submit a cover letter and resume to careerapplications@unitywater.com

For more information about Unitywater, this position and to access a full position description, visit www.unitywater.com

Vacancy reference: 2017-545

Applications close: Tuesday 31 October 2017

To be considered for this role you will need to demonstrate your eligibility and right to work in Australia.

Unitywater is committed to a diverse and inclusive workplace.



Principal Development Engineer/Officer

EMPLOYMENT TYPE	Permanent, full time
REMUNERATION VALUE	Officer Level 7
DIVISION	Infrastructure Planning and Capital Delivery
REPORTS TO	Team Leader Connections Approvals
LOCATION	Southern Service Centre, Morayfield
POSITION DESCRIPTION ID	PD0376
DELEGATION LEVEL	Not Applicable

Your Employer

Unitywater is a statutory authority that provides water and sewerage services to the Moreton Bay, Sunshine Coast and Noosa local authority areas on behalf of its citizens. Unitywater is governed by an independent Board and have a Participation Agreement with these councils.

Unitywater is responsible for approximately \$3.2 billion of essential service infrastructure and our residential and business customers are spread across 5223 square kilometres, from Cooroy in the north to Samford in the south, Bribie Island in the east and Kenilworth in the west. Unitywater's priority is providing a population of approximately 724,500 people with a high quality, safe and reliable water supply and sewerage service that is economically and environmentally sustainable.

Your Opportunity

Provide high level expert engineering advice, assessment and service delivery in relation to all development applications and approvals, including politically sensitive requests, corporate activities, communication with external bodies, and other matters to a wide range of internal and external stakeholders.

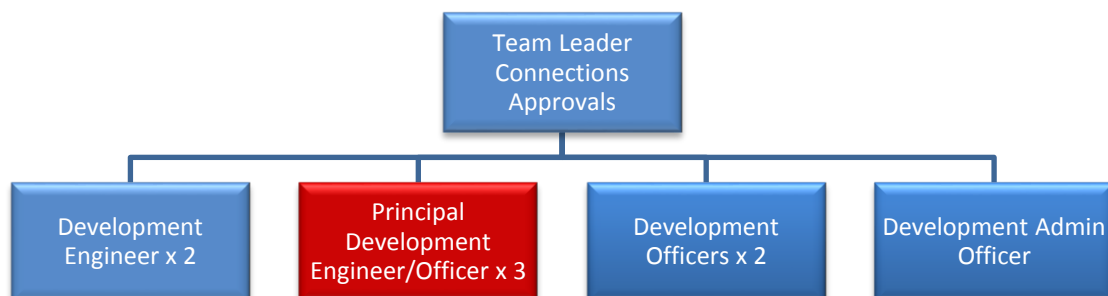
Your Accountabilities

Key functions of the role include:

- Assess connections applications and formulate decision notices that are compliant with legislation, Unitywater's policies and which facilitate sensible cost effective development outcomes.
- Control and negotiate the coordination of the development assessment process with developers.
- Prepare technical schedules for inclusion in Infrastructure Agreements and negotiate agreement of such schedules with developers.
- Influence, lead and negotiate large and complex development applications.
- Provide specialist advice with regard to water supply and sewerage development applications.
- Prepare correspondence, reports, briefing notes and information papers relevant to applications and approvals processes and functions of Development Services.
- Mentor and develop capability of other team members in the effective management of development approvals, inspections, field tests and audits.
- Interpret and perform all tasks in accordance with statutory requirements, planning schemes and applicable local, state and federal government legislation, regulations and guidelines.
- Develop solutions to engineering problems in consultation with developer's consultants.
- Review and provide innovative solutions to improve the efficiency of current internal and external Development Services processes.
- Build effective working relationships with both internal and external stakeholders.
- Provide timely response to customer enquiries.

Your Reporting Relationships

The position incumbent has a direct line reporting to **Team Leader Connections Approvals**.



Your Qualities

A **mandatory requirement** of this role is:

- Relevant industry qualifications such as a Bachelor Degree, or Diploma in Civil Engineering or similar field. Ongoing professional training in engineering or environmental management would be an advantage.
- Significant experience in a similar role or in a position with a similar skill set.
- Demonstrated supervisory experience in a civil engineering environment.
- Demonstrated experience in water supply and sewerage aspects relevant to land development.

- C Class Drivers License.

Within the context of the duties and accountabilities described above, the ideal applicant will be someone who has:

- Knowledge of, or the ability to quickly acquire knowledge of the Sustainable Planning Act and Integrated Development Assessment System, South East Queensland Water (Distribution and Retail Restructuring) Act, Water Supply Act, the Environmental Protection Act and related Regulations, the South-East Queensland Design and Construction Code and Australian Standards relevant to water supply and sewerage infrastructure.
- Well-developed interpersonal skills, including effective consultation and negotiation, with a strong focus on provision of quality customer service.
- Demonstrated high level written communication skills with the ability to write technical reports.
- Proven ability to interpret and effectively apply; legislation, guidelines, town planning documentation and design manuals.
- Well-developed ability to read, interpret and implement engineering plans and specifications and apply sound engineering expertise and knowledge.
- Proven ability to design water supply and sewerage reticulation to Unitywater's requirements, standards and specifications.
- Proven consistency in making sound decisions, utilising information, knowledge and experience to analyse and form judgements.
- Demonstrated ability to initiate and implement process and procedural improvements.
- Well developed investigative, analytical and research skills.
- Clearly and influentially articulates a vision, encourages and supports others while building valued and trusting relationships with others.
- Competency in the Microsoft Office suite of programs

Your Employee Obligations

Our organisational values

Reliability:	We mean and do what we say: consistently, professionally and in a timely manner.
Safety:	We think, walk and talk safety every day, and have the systems and processes in place to protect us, our customers, the community and the environment from our activities.
Honesty & Integrity:	The work we do is always and only in the best interests of our customers, stakeholders, community and the environment.
Efficiency:	We don't waste time, money or effort because we have the right people in the right place getting it right first time.
One Team:	No one succeeds at the expense or exclusion of others, and we are proud of our collective success.
Innovation:	We seek new ways of doing things better.

Integrated Management System Responsibilities

Unitywater employees are required to comply with good corporate governance to encourage Unitywater to create and establish a values-based culture by demonstrating due diligence in the promotion of a quality, safe, environmentally sustainable and ethical working environment.

Safety Specific Responsibilities

Unitywater employees are required to comply with the Work Health & Safety Act 2011 by demonstrating due diligence in the promotion of a safe and healthy working environment.

Environment Responsibilities

Unitywater employees are required to comply with the Environmental Protection Act 1994. They are to take reasonable and practical measures to prevent environmental harm and demonstrate due diligence.

Equity and Diversity

Unitywater values a diverse and inclusive workforce and recognises the positive impact that this can have on organisational performance. As such, Unitywater employees are required to demonstrate commitment to creating an inclusive employee community grounded in respect and appreciation of individual differences.

Delegation

Unitywater employees are required to comply with the financial delegations of the role as per the Unitywater's Delegations of Authority Policy.

After Hours Service

This role may be required to participate in after hours work and be part of an on call roster as the need may arise to ensure the continuity of service to Unitywater's customers.

