

**Disclaimer**  
 These Maps are supplied under the following conditions:-  
 Mapping details are supplied from information contained in Unitywater's records which may have been furnished to Unitywater by other persons. Unitywater gives no warranty or guarantee of any kind, expressed, implied, or statutory, to the correctness or accuracy of the map details or the degree of compliance with any standards in this matter. Persons making decisions with financial or legal implications must not rely upon the map details shown. For the purpose of determining whether any particular facts or circumstances exist and Unitywater (and its officers and agents) expressly disclaim responsibility for any loss or damage suffered as a result of placing reliance upon this information.

| Legend |  |
|--------|--|
|        | DCDB                                     |
|        | Emergency Storages & Overflow Structures |
|        | M&E Network                              |
|        | Pump Stations & Valve Pits               |
|        | Sewage Treatment Plant Upgrades          |
|        | Rising Mains                             |
|        | Pipelines (large >300mm)                 |
|        | Pipelines (small)                        |
|        | Other                                    |

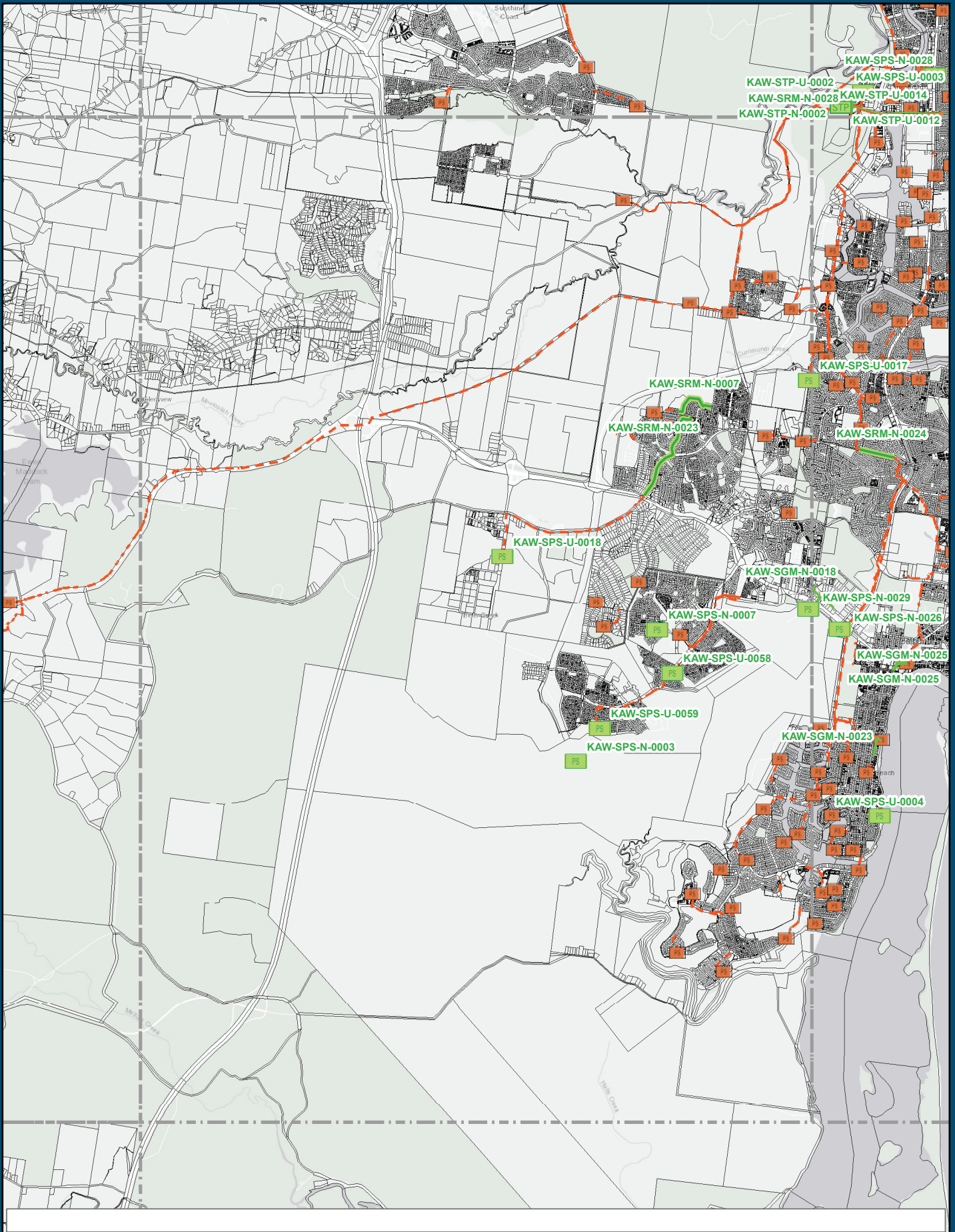
**Sewerage Schedule of Works Map 11**

Date: 4/04/2019

0 1 2  
Kilometers

1:50,000 (A3)

Unitywater  
 Geospatial Information Systems  
 Ground Floor, 33 King St  
 Caboolture QLD 4510  
 Inquiries: 1300 0 Unity (1500 086 489)  
 Email: gis@unitywater.com



**Disclaimer**  
 These Maps are supplied under the following conditions:-  
 Mapping details are supplied from information contained in Unitywater's records which may have been furnished to Unitywater by other persons. Unitywater gives no warranty or guarantee of any kind, expressed, implied, or statutory, to the correctness or accuracy of the map details or the degree of compliance with any standards in this matter.  
 Persons making decisions with financial or legal implications must not rely upon the map details shown, for the purpose of determining whether any particular facts or circumstances exist and Unitywater (and its officers and agents) expressly disclaim responsibility for any loss or damage suffered as a result of placing reliance upon this information.

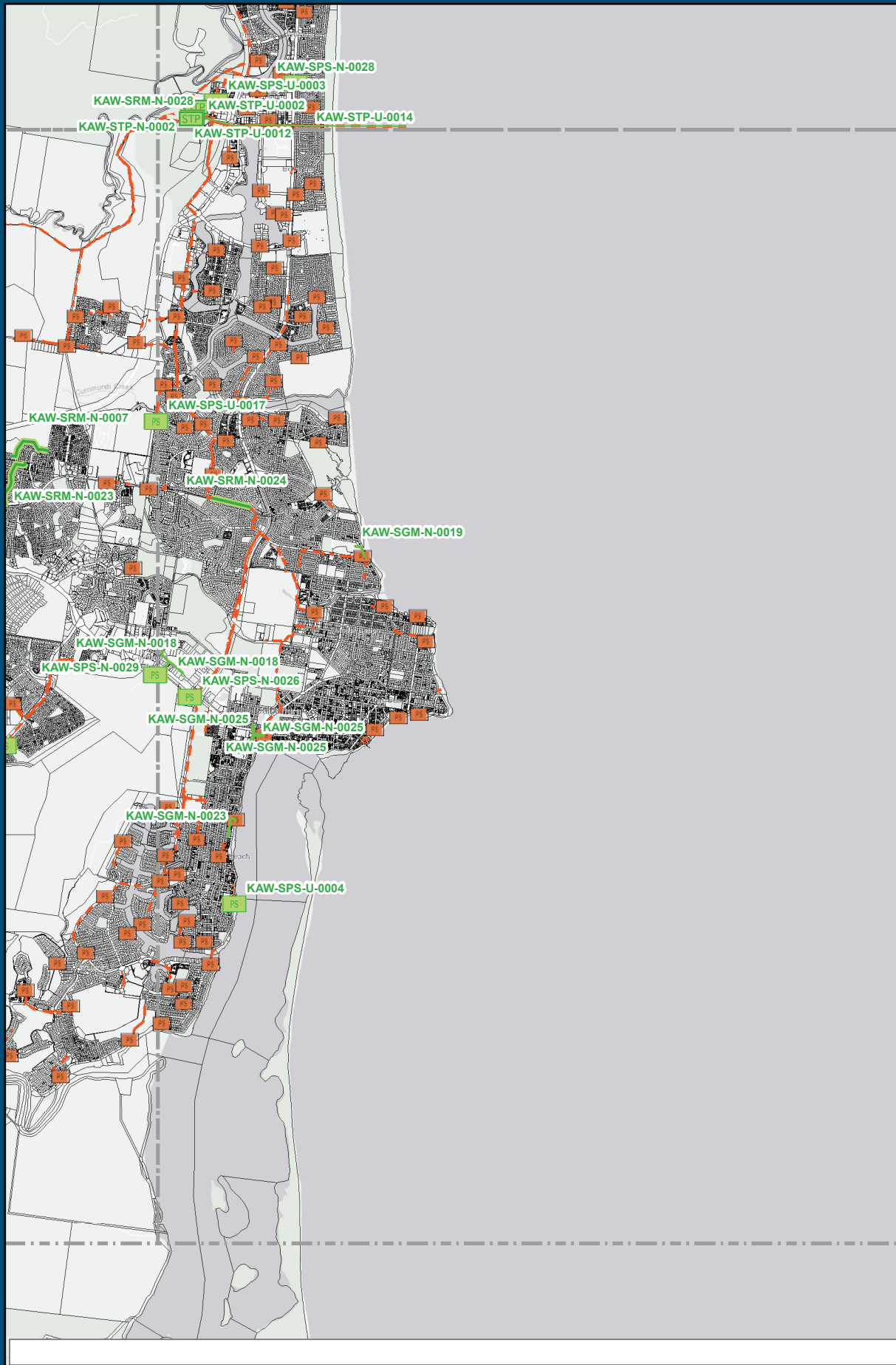
| Legend |  |
|--------|--|
|        | DCDB                                     |
|        | Emergency Storages & Overflow Structures |
|        | M&E Network                              |
|        | Pump Stations & Valve Pits               |
|        | Sewage Treatment Plant Upgrades          |
|        | Rising Mains                             |
|        | Pipelines (large >300mm)                 |
|        | Pipelines (small)                        |
|        | Other                                    |

**Sewerage Schedule of Works Map 12**

Date: 4/04/2019

Kilometers  
 1:50,000 (A3)

Geospatial Information Systems  
 Ground Floor, 33 King St  
 Caboolture QLD 4510  
 Inquiries: 1300 Unity (1500 086 489)  
 Email: gis@unitywater.com



**Disclaimer**  
 These Maps are supplied under the following conditions:-  
 Mapping details are supplied from information contained in Unitywater's records which may have been furnished to Unitywater by other persons. Unitywater gives no warranty or guarantee of any kind, expressed, implied, or statutory, to the correctness or accuracy of the map details or the degree of compliance with any standards in this matter.  
 Persons making decisions with financial or legal implications must not rely upon the map details shown. For the purpose of determining whether any particular facts or circumstances exist and Unitywater (and its officers and agents) expressly disclaim responsibility for any loss or damage suffered as a result of placing reliance upon this information.

- Legend**
- DCDB
  - Emergency Storages & Overflow Structures
  - M&E Network
  - Pump Stations & Valve Pits
  - Sewage Treatment Plant Upgrades

- Rising Mains
- Pipelines (large >300mm)
- Pipelines (small)
- Other

## Sewerage Schedule of Works

## Map 13

0 1 2  
 Kilometers

N

Unitywater  
 Geospatial Information Systems  
 Ground Floor, 33 King St  
 Caboolture QLD 4510  
 Inquiries: 1300 0 Unity (1500 086 489)  
 Email: [gis@unitywater.com](mailto:gis@unitywater.com)

Date: 4/04/2019

1:50,000  
 (A3)

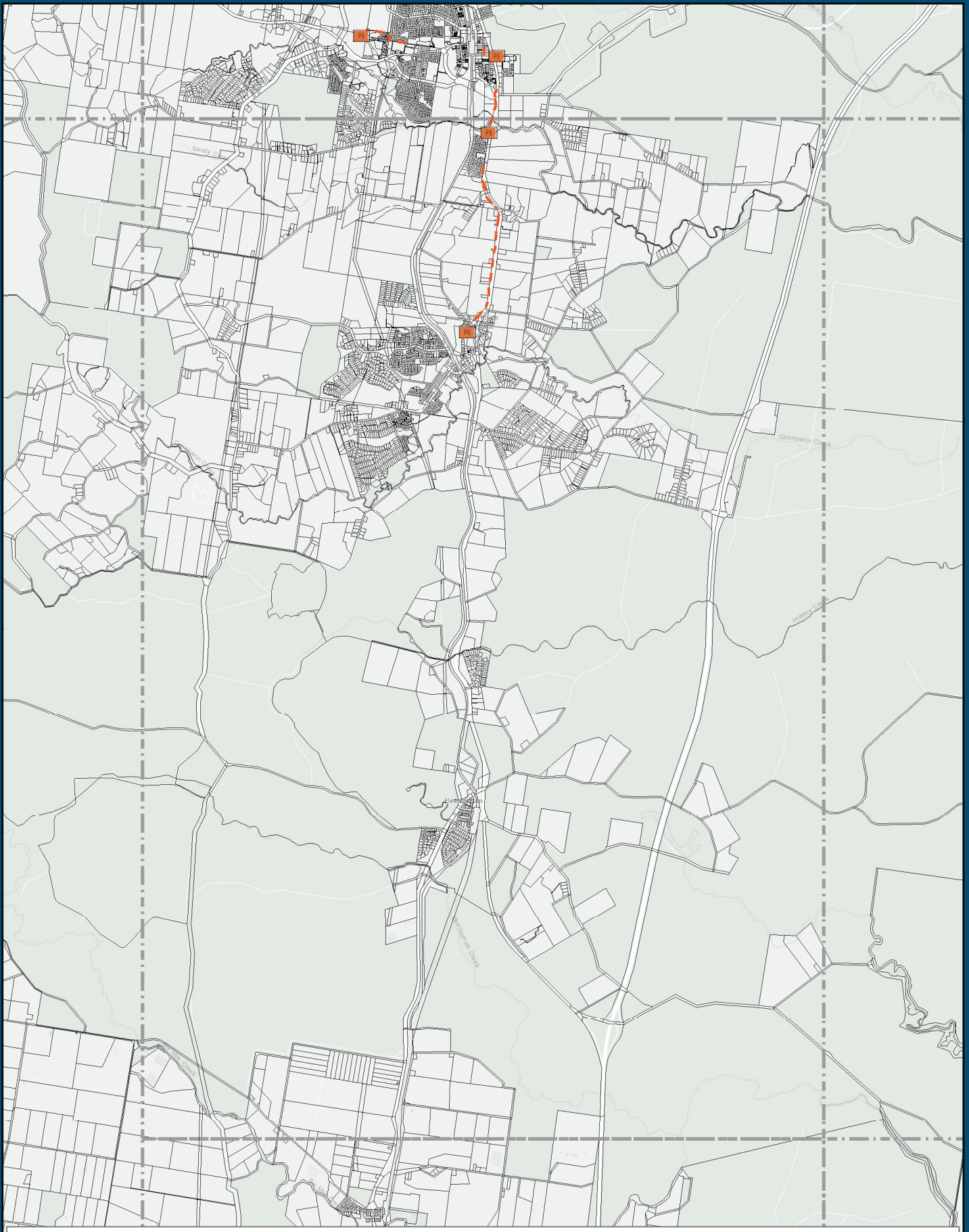


**Disclaimer**  
 These Maps are supplied under the following conditions:-  
 Mapping details are supplied from information contained in Unitywater's records which may have been furnished to Unitywater by other persons. Unitywater gives no warranty or guarantee of any kind, expressed, implied, or statutory, to the correctness or accuracy of the map details or the degree of compliance with any standards in this matter. Persons making decisions with financial or legal implications must not rely upon the map details shown. For the purpose of determining whether any particular facts or circumstances exist and Unitywater (and its officers and agents) expressly disclaim responsibility for any loss or damage suffered as a result of placing reliance upon this information.

| Legend |  |
|--------|--|
|        | DCDB                                     |
|        | Emergency Storages & Overflow Structures |
|        | M&E Network                              |
|        | Pump Stations & Valve Pits               |
|        | Sewage Treatment Plant Upgrades          |
|        | Rising Mains                             |
|        | Pipelines (large >300mm)                 |
|        | Pipelines (small)                        |
|        | Other                                    |

**Sewerage Schedule of Works Map 14**

0 1 2  
 Kilometers  
  
 Unitywater  
 Geospatial Information Systems  
 Ground Floor, 33 King St  
 Caboolture QLD 4510  
 Inquiries: 1300 0 Unity (1300 086 489)  
 Email: gis@unitywater.com  
 Date: 4/04/2019  
 1:50,000 (A3)



**Disclaimer**  
 These Maps are supplied under the following conditions:-  
 Mapping details are supplied from information contained in Unitywater's records which may have been furnished to Unitywater by other persons. Unitywater gives no warranty or guarantee of any kind, expressed, implied, or statutory, to the correctness or accuracy of the map details or the degree of compliance with any standards in this matter.  
 Persons making decisions with financial or legal implications must not rely upon the map details shown, for the purpose of determining whether any particular facts or circumstances exist and Unitywater (and its officers and agents) expressly disclaim responsibility for any loss or damage suffered as a result of placing reliance upon this information.

| Legend |  |
|--------|--|
|        | DCDB                                     |
|        | Emergency Storages & Overflow Structures |
|        | M&E Network                              |
|        | Pump Stations & Valve Pits               |
|        | Sewage Treatment Plant Upgrades          |
|        | Rising Mains                             |
|        | Pipelines (large >300mm)                 |
|        | Pipelines (small)                        |
|        | Other                                    |

**Sewerage Schedule of Works Map 15**

0 1 2  
 Kilometers

Unitywater  
 Geospatial Information Systems  
 Ground Floor, 33 King St  
 Caboolture QLD 4510  
 Inquiries: 1300 0 Unity (1500 086 489)  
 Email: [gis@unitywater.com](mailto:gis@unitywater.com)

Date: 4/04/2019

1:50,000 (A3)