

**DESIGN NOTES (remove after design completed):**

1. CHECK ALL TERMINAL DESIGNATIONS AS PER MANUFACTURERS DATA SHEETS/MANUALS
2. NOT USED
3. NOT USED
4. IF REQUIRED
5. NOT USED
6. NOT USED
7. MCC CONTROL TERMINAL - TBC DURING DETAILED DESIGN
8. NOT USED
9. NOT USED
10. DDOx - RTU OUTPUT - PUMP 2 FORWARD  
DDOy - RTU OUTPUT - PUMP 2 REVERSE  
DDOz - RTU OUTPUT - RESET  
K2A - PHASE FAIL PROTECTION - STATION AC SUPPLY

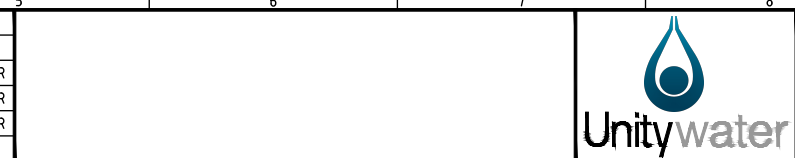
**NOTES:**

1. WIRE NUMBERS TO BE PREFIXED BY MTRxxxx-
2. DEVICE NUMBERS TO BE SUFFIXED BY THE MOTOR NUMER (xxxx)
3. FOR TERMINATION DETAILS REFER TO xxxxxx-E-DR-xxxx-xx

**LEGEND**

- EQUIPMENT TERMINAL
- ▲ MCC POWER TERMINAL - WITHIN CELL/SECTION/CABLE ZONE
- ⊙ MCC CONTROL TERMINAL - WITHIN CELL/SECTION/CABLE ZONE
- LCS/FIELD DEVICE/JUNCTION BOX TERMINAL
- ⊕ PLC MARSHALLING PANEL TERMINAL
- ⊖ ELV DISCONNECT TERMINAL
- ELV FUSED DISCONNECT TERMINAL
- WIRING EXTERNAL TO MCC

A3	2	30.03.26	UPDATED K2A, REMOVED Q3 & K1A CONTACTS, UPDATED S6 SYMBOL, ADDED AC WIRE NUMBERS	YV	TGS	TGS	TGS	UNITYWATER
	1	03.06.24	UPDATED WITH NEW RELAY CONVENTIONS	YV	TGS	TGS	TGS	UNITYWATER
	0	20.09.23	ISSUED FOR USE	YV	TGS	TGS	TGS	UNITYWATER
	REV	DATE	DESCRIPTION OF CHANGE	DRAWN	DESIGNED	REVIEWED	APPROVED	COMPANY



**Unitywater**

STANDARD ELECTRICAL DRAWING  
DOL - NETWORK - PUMP 2 - NO DISCONNECT  
DOL/SS MOTOR SCHEMATICS

PROJECT NUMBER	IFXXXXXX
REVISION DATE	03.06.24
DISCIPLINE CODE	E
DRAWING NO.	UWDSTD-E-DR-9005-44
REVISION	1